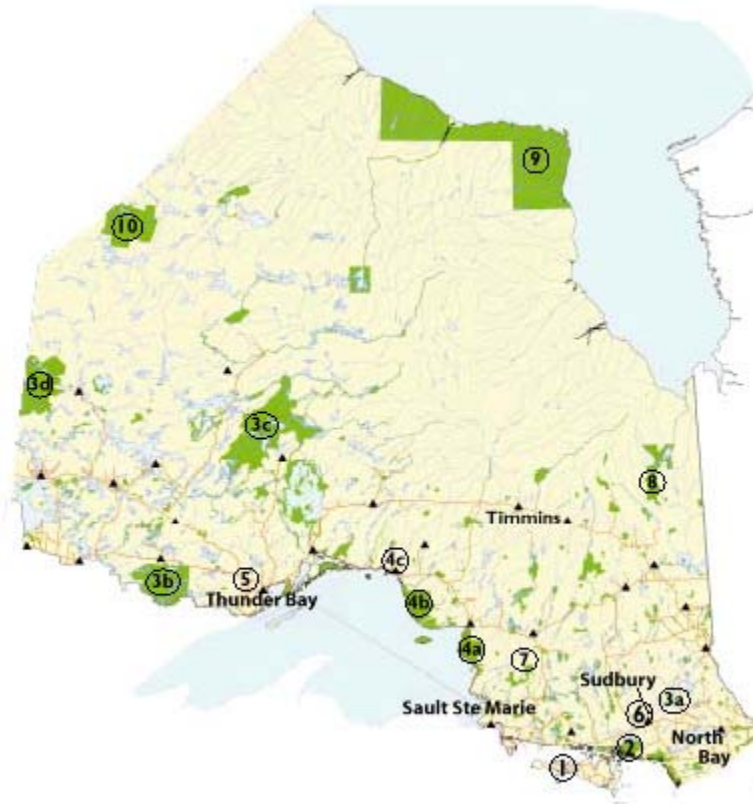


Special Places and Species

There are many exciting and accessible natural places to explore within the Northern region



1. Manitoulin Island, lying off of the north shore of Lake Huron, is the largest freshwater island in the world. There is much to see and do on the island. Visit Christina Bay, Misery Bay Provincial Nature Reserve, or the Gore Bay Area. A great diversity of plant communities exists, ranging from species common to the western prairies to maritime and Great Lakes-adapted species.
2. Hike the La Cloche Mountains within Killarney Provincial Park and climb Silver Peak. Spectacular white quartzite ridges and bottomless blue lakes have made the park world famous. It has been expanded and includes the rugged peninsulas that extend into the cold waters of Georgian Bay and lower-lying lakelands to the north of the rugged La Cloche ridges.
3. (3a) Lady Evelyn-Smoothwater Provincial Park. Northern Ontario's lake-dotted landscape makes it a mecca for canoeists, who can paddle gently lake circle routes or whitewater. Among the best places to paddle are the Temagami region north of

North Bay and (3b)Quetico Provincial Park west of Thunder Bay (and just south of Atikokan). For even greater solitude, explore some of our biggest and most remote wilderness parks; the giant (3c) Wabakimi or the very large (3d)Woodland Caribou.

4. The Superior and Georgian Bay shorelines of this region are now part of the Great Lakes Heritage Coast, a special designation meant to recognize the beauty and diversity of these wild shores. From the beautiful quartzite ridges of Killarney to the spectacular headlands and sand beaches of (4a)Lake Superior Provincial Park and (4b)Pukaskwa National Park, the scenery is breathtaking. Stop in at (4c)Neys Provincial Park to see beautiful boreal forest and tiny arctic plants or take the long walk out on Sleeping Giant to Thunder Cape, a gathering point for migrating birds.
5. An hour's drive from Thunder Bay will bring you to Whitefish Lake, a shallow wild rive lake that is also frequented by bald eagles and red-necked grebes. The black spruce bog at the west end of the lake is also known for its uncommon orchids. Take 11/117 20 km. west to Stanley, turn left onto Hwy. 588 and go 54km. to Artesian Wells Resort. Bring a canoe or rent one at the resort.
6. You can explore 10-hectares of cattail marsh in the heart of Sudbury at the Lily Creek Marsh. It's an active place with great blue herons, Virginia rails, snapping and Midland painted turtles and busy beaver and muskrat populations, at the junction of Paris Street and Ramsey Lake Road.
7. Algoma Headwaters Provincial Park.
8. Kesagami Provincial Park.
9. Polar Bear Provincial Park.
10. Opasquia Provincial Park.
11. Hay Marsh, Kerastas Tract and St. Joseph Island - Federation nature reserves.

For more areas to visit, see A Nature Guide to Ontario, available from Ontario Nature.